



**Flüssiggas-Anlagen**

## **»Group 24«**

**Accessories for Road Tankers**

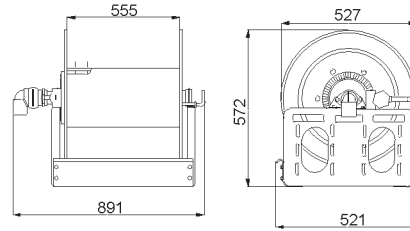


Flüssiggas-Anlagen GmbH • Peiner Straße 217 • D - 38229 Salzgitter (Germany)  
Tel. +49 (0) 53 41 / 86 97-0 • Fax +49 (0) 53 41 / 86 97-11  
E-Mail: [info@fas-uni.de](mailto:info@fas-uni.de) • <http://www.fas-uni.de>



**Hose Reel PN 25, with hand crank**, for LPG high-pressure hoses LPG 25 and LPG 32, hose connection G 1 1/4" male, inlet 1 1/2" female NPT, with swivel joint 90°, completely mounted on base frame, primed and painted, with test report 2.2 to EN 10 204

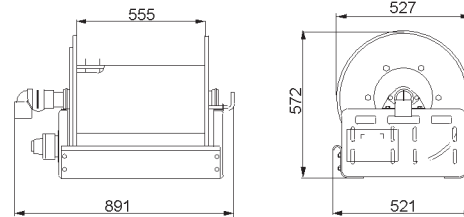
Type:	<b>A</b> = Inlet and drive right-hand		
Type:	<b>B</b> = Inlet and drive left-hand		
<b>Order no.</b>	<b>Order no.</b>	for high-pressure	<b>Weight</b>
Type <b>A</b>	Type <b>B</b>	hose lengths	(kg)
<b>24 331</b>	<b>24 332</b>	LPG 25 - up to 44 m	50,0
		LPG 32 - up to 38 m	
<b>24 333</b>	<b>24 334</b>	LPG 25 - up to 60 m	57,0
		LPG 32 - up to 50 m	



Dimensions to order nos. 24 331 and 24 332

**Hose Reel PN 25, with pneumatic drive**, for LPG high-pressure hoses LPG 25 and LPG 32, hose connection G 1 1/4" male, inlet 1 1/2" female NPT, with swivel joint 90°, completely mounted on base frame, primed and painted, with test report 2.2 to EN 10 204

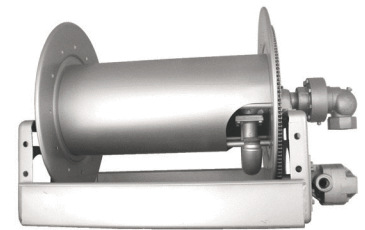
Type:	<b>A</b> = Inlet and drive right-hand		
Type:	<b>B</b> = Inlet and drive left-hand		
<b>Order no.</b>	<b>Order no.</b>	for high-pressure	<b>Weight</b>
Type <b>A</b>	Type <b>B</b>	hose lengths	(kg)
<b>24 341</b>	<b>24 342</b>	LPG 25 - up to 44 m	60,0
		LPG 32 - up to 38 m	
<b>24 343</b>	<b>24 344</b>	LPG 25 - up to 60 m	68,0
		LPG 32 - up to 50 m	



Dimensions to order nos. 24 341 and 24 342

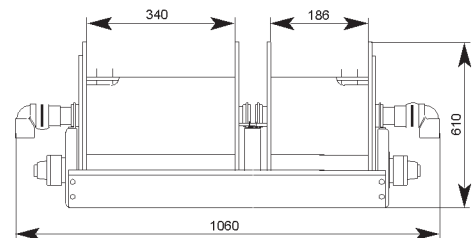
**Hose Reel PN 25, with hydraulic drive**, for LPG high-pressure hoses LPG 25 and LPG 32, inlet 1 1/2" female NPT, with swivel joint 90°, completely mounted on base frame, primed and painted, with test report 2.2 to EN 10 204

Type:	<b>A</b> = Inlet and drive right-hand, hose connection G 1 1/4" male				
Type:	<b>B</b> = Inlet and drive left-hand, hose connection G 1 1/4" male				
Type:	<b>C</b> = Inlet and drive left-hand, hose connection 1 1/4" male NPT				
Type:	<b>D</b> = Inlet and drive right-hand, hose connection 1 1/4" male NPT				
<b>Order no.</b>	<b>Order no.</b>	<b>Order no.</b>	<b>Order no.</b>	for high-pressure	<b>Weight</b>
Type <b>A</b>	Type <b>B</b>	Type <b>C</b>	Type <b>D</b>	hose lengths	(kg)
<b>24 361</b>	<b>24 362</b>	<b>24 365</b>	<b>24 366</b>	LPG 25 - up to 44 m	62,0
				LPG 32 - up to 38 m	
<b>24 363</b>	<b>24 364</b>	<b>24 368</b>	<b>24 367</b>	LPG 25 - up to 60 m	68,0
				LPG 32 - up to 50 m	



**Tandem Hose Reel PN 25**, left reel for LPG high-pressure hose LPG 25 for a length up to 40 m with swivel joint 90°, inlet 1 1/2" female NPT and hose connection 1" female NPT, right reel for LPG high-pressure hose LPG 13 for a length up to 40 metres with swivel joint 90°, inlet 1" female NPT and hose connection 1/2" female NPT, completely mounted on a base frame, primed and painted, with test report 2.2 to EN 10 204

Type:	<b>A</b> = with hand drive				
Type:	<b>B</b> = with pneumatic drive				
Type:	<b>C</b> = with hydraulic drive				
<b>Order no.</b>	<b>Weight</b>	<b>Order no.</b>	<b>Weight</b>	<b>Order no.</b>	<b>Weight</b>
Type <b>A</b>	(kg)	Type <b>B</b>	(kg)	Type <b>C</b>	(kg)
<b>24 356</b>	92,0	<b>24 329</b>	106,0	<b>24 351</b>	110,0



Other executions are available on request.

**Complete High-pressure Hose Line** suitable for hose reel, complete with hose connections on both sides, inlet flat seal with union nut, outlet male NPT-thread, including test certificate according to TRG 402

Type:	<b>A</b> = length 40 m					
Type:	<b>B</b> = length 50 m					
<b>Order no.</b>	<b>Order no.</b>	Hose	Hose connections		<b>Weight</b>	<b>Weight</b>
Type <b>A</b>	Type <b>B</b>	LPG	Inlet	Outlet	Type <b>A</b>	Type <b>B</b>
<b>24 005</b>	<b>24 014</b>	25	G 1 1/4"	1" NPT	42,0	52,0
<b>24 006</b>	<b>24 015</b>	32	G 1 1/4"	1 1/4" NPT	42,0	52,0

Other hose sizes, hose lengths and connections are available on request.

**Pneumatic Drive for Hose Reel with Bracket with cog-wheel with 10 cogs (z = 10, t = 1/2" x 3/16").**

The pneumatic motor has a built-in coupling. When pressure is applied, the coupling switches automatically and the cog-wheel drives the hose reel. If the supply of compressed air is switched off, the motor is automatically thrown out of the gear and the hose can be unwound from the reel without any resistance.



To guarantee safe operation, a maintenance unit must be installed in front of the compressed air inlet.

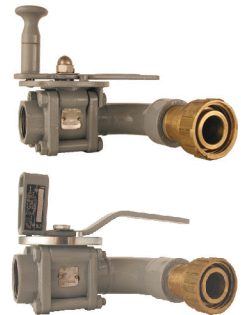
Order no.	Weight
24 016	4,3

**Ball Valve PN 25, for road tankers, with positioning plate and locking device to prevent unintentional opening, coupling for filler valve of brass, with inspection certificate 3.1.B to EN 10 204**

Type: **A = Standard execution**, ball valve of steel C 22.8, with half coupling, pipe bend and locking device of steel, primed and painted

Type: **B = Execution with ball valve of stainless steel 1.4401** respectively 1.4404, with half coupling, pipe bend and locking device of stainless steel Type A + B

Type: **C = Execution with hoop guard**, ball valve of steel C 22.8, with half coupling, pipe bend and locking device of steel, primed and painted



Order no.	Order no.	Order no.	DN	Filler connection	Hose connection	Weight
Type A	Type B	Type C		Coupling	Ball valve	(kg)
24 030	24 028	24 008	25	1 3/4" ACME female	1" NPT-female	2,5
24 023	24 029	24 009	32	1 3/4" ACME female	1 1/4" NPT-female	3,1

Spare parts on request.

**Excess Flow Valve PN 25, stainless steel 1.4541, for road tankers, 2" female NPT connection on both sides, suitable for installation in front of hose reel, with inspection certificate 3.1.B to EN 10 204**



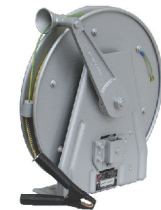
Order no.	FAS	Capacity (liquid)	Weight
24 013	697-2	approx. 1210 l/min	2,5

**Cable Drum type FAS, with cable and earthing clamp, with spring rewind, lockable in any position, cable material copper, cable cross section 2,5 mm<sup>2</sup>, with test report 2.2 to EN 10 204**

Type: **A = open execution**

Type: **B = closed execution**

Order no.	Order no.	Cable length	Weight
Type A	Type B	(m)	(kg)
24 321	-	50	17,6
24 322	-	25	17,0
-	24 019	30	7,9



**Wheel Block stainless steel, ex-proof switch as rolling protection for road tankers in hazardous location, suitable for tankers up to 40 tons gross weight, with mechanical switch EEx dII C T6, 250V AC/6A respectively 24V DC/4A, potential-free change-over contact with cable connecting end length = 10 metres and with flexible plastic protection hose, with PTB-certificate**

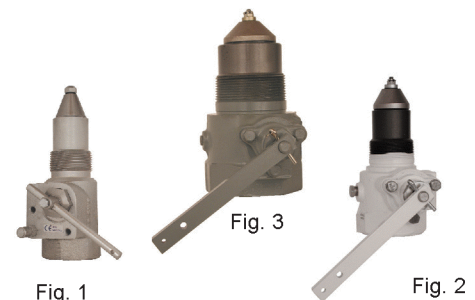
Order no. Execution

24 191 In case of interruption of contact, e.g. in case of rolling of the tank truck, the stop of the filling process is effected by the quick-acting shut-off equipment, respectively by the emergency stop system



**Internal Valve PN 25, with male and female NPT-connection, body of ductile iron ASTM A395 or equivalent, with built-in excess flow valve<sup>2)</sup>, with operating lever, actuated mechanically by cable, by pneumatic or by hydraulic force, with test report 2.2 to EN 10 204**

Order no.	Type RegO	Type Fisher	Connection	No. of Outlets	Weight (kg)	Fig.
24 131	A3209 A050	-	1 1/4"	1	0,9	1
24 132	A3212 A175	-	2"	1	4,1	2
24 135	A3213 A300	-	3"	1	7,3	3
24 101	-	C407-10	1 1/4"	1	0,9	1
24 102 <sup>1)</sup>	-	C427-16	2"	1	4,1	2
24 103	-	C421-16	2"	2	5,0	like 2
24 104	-	C402-16	2"	3	6,8	like 2
24 105 <sup>1)</sup>	-	C427-24	3"	1	7,3	3
24 106	-	C421-24	3"	2	9,6	like 3
24 107	-	C402-24	3"	3	17,2	like 3



**Pneumatic Actuator for RegO internal valves**

Order no.	Type RegO	for internal valve
24 137	A3209 PA	1 1/4"
24 138	A3212 PA	2"
24 139	A3213 PA	3"

<sup>1)</sup> with BAM approval

RegO-internal valves with ANSI-flange on request.

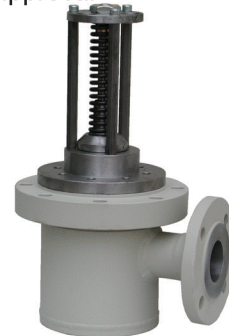
<sup>2)</sup> When placing the order, it is absolutely necessary to indicate the required closing flow of the internal excess flow valve.



**Internal Valve for Bottom Discharge PN 25, type FAS for DIN flange connection, for road tankers and stationary tanks with inspection certificate 3.1.C to EN 10 204, with individual TÜV approval**

In case of failure of operating power, the valve closes automatically by means of a spring. With hydraulic or pneumatic control system (6 bar), body of steel H II and TTST 35 N, inner cylinder and piston rod of stainless steel 1.4301.

Order no.	DN	R	L	H	h
24 051	25	67	130	190	120
24 052	32	80	150	210	130
24 053	50	84	165	225	130
24 054	80	97	210	300	140
24 055	100	110	240	330	165



**Welding Flange PN 25, of steel TTST E 355, with inspection certificate 3.1.A to EN 10 204**

Order no.	DN	øD	Order no.	DN	øD
24 061	25	200	24 064	80	290
24 062	32	240	24 065	100	315
24 063	50	250			

**Internal Valve type Whessoe, for LPG road tankers, stationary tanks and with additional housing for pipelines. Control is effected by means of auxiliary energy. Do not serve as shut-off valve despite their tight seat.**

In case of failure of auxiliary energy the valves close automatically by means of a spring. With hydraulic or pneumatic control system (min. 5 bar), body of steel ASTM A352 Grade LCB, chromed steel cylinder and pistons, spring of stainless steel, seals resistant against LPG, connection auxiliary energy 3/8" female NPT with strainer.

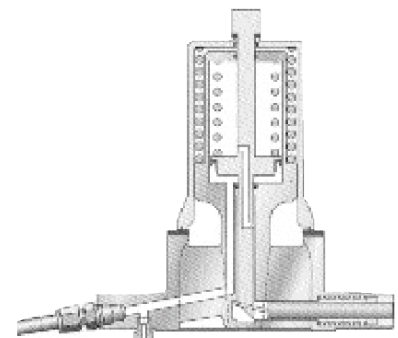
Type: **A** = Type 6239, for **pneumatic** control, flange connection to DIN 2635, with approval according to EEC directive 94/55/CE with inspection certificate 3.1.B to EN 10 204

Order no.	max. operation pressure	Connection Size	Weight (kg)
<b>Type A</b>			
24 771	25 bar	DN 50 / 2"	8,0
24 772 <sup>1)</sup>	25 bar	DN 80 / 3"	12,0
24 773	25 bar	DN 100 / 4"	20,0
24 774	25 bar	DN 150 / 6"	32,0

Type: **B** = Type 6239, for **pneumatic** control, flange connection according to ANSI/ASA RF, 300 lbs, with test report 2.2 to EN 10 204

Type: **C** = Type 6139, from 8" type 6240 up, for **hydraulic** control, flange connection according to ANSI/ASA RF, 300 lbs, with test report 2.2 to EN 10 204

Order no.	Order no.	max. operation pressure	Connection ANSI/ASA RF	Weight (kg)
<b>Type B</b>	<b>Type C</b>			
24 781	24 721	21,0 bar	2"	9,0
24 782	24 722	21,0 bar	3"	12,0
24 783	24 723	17,5 bar	4"	21,0
24 784	24 724	17,5 bar	6"	32,0
-	24 725	17,5 bar	8"	47,0
-	24 726	17,5 bar	10"	63,0



**Hand pump for internal valves with hydraulic control**

Order no.	Execution	Weight
24 751	Type 7012, connection 1/4" BSP, with oil tank, safety relief valve and pressure gauge, max. oil pressure 80 bar	15,0



**Additional body for pipelines, for internal valves with ANSI/ASA RF-flange connection**

Order no.	for internal valve	max. operation pressure	Weight (kg)
	with connection		
24 731	2"	30 bar	20,0
24 732	3"	30 bar	31,0
24 733	4"	30 bar	50,0
24 734	6"	30 bar	73,0
24 735	8"	30 bar	103,0
24 736	10"	30 bar	127,0

**Spare parts sets**

Order no.	for internal valve	Order no.	for internal
	Type A + B		Type C
24 791	6239 - 2"/DN 50	24 741	6139 - 2"
24 792	6239 - 3"/DN 80	24 742	6139 - 3"
24 793	6239 - 4"/DN 100	24 743	6139 - 4"
24 794	6239 - 6"/DN 150	24 744	6139 - 6"
		24 745	6240 - 8"
		24 746	6240 - 10"

Valves for other products are available on request.

**Inspections for Metering Systems in Road Tankers**

In our factory's workshop we have installed a calibration stand for LPG metering systems. With this device we are able to recalibrate your existing metering systems in tank trucks and to execute a preliminary test for new meters.

Calibration dates and calibration charges are available on request.